

Strategic Commissioning Governance and Support

Tom Purnell

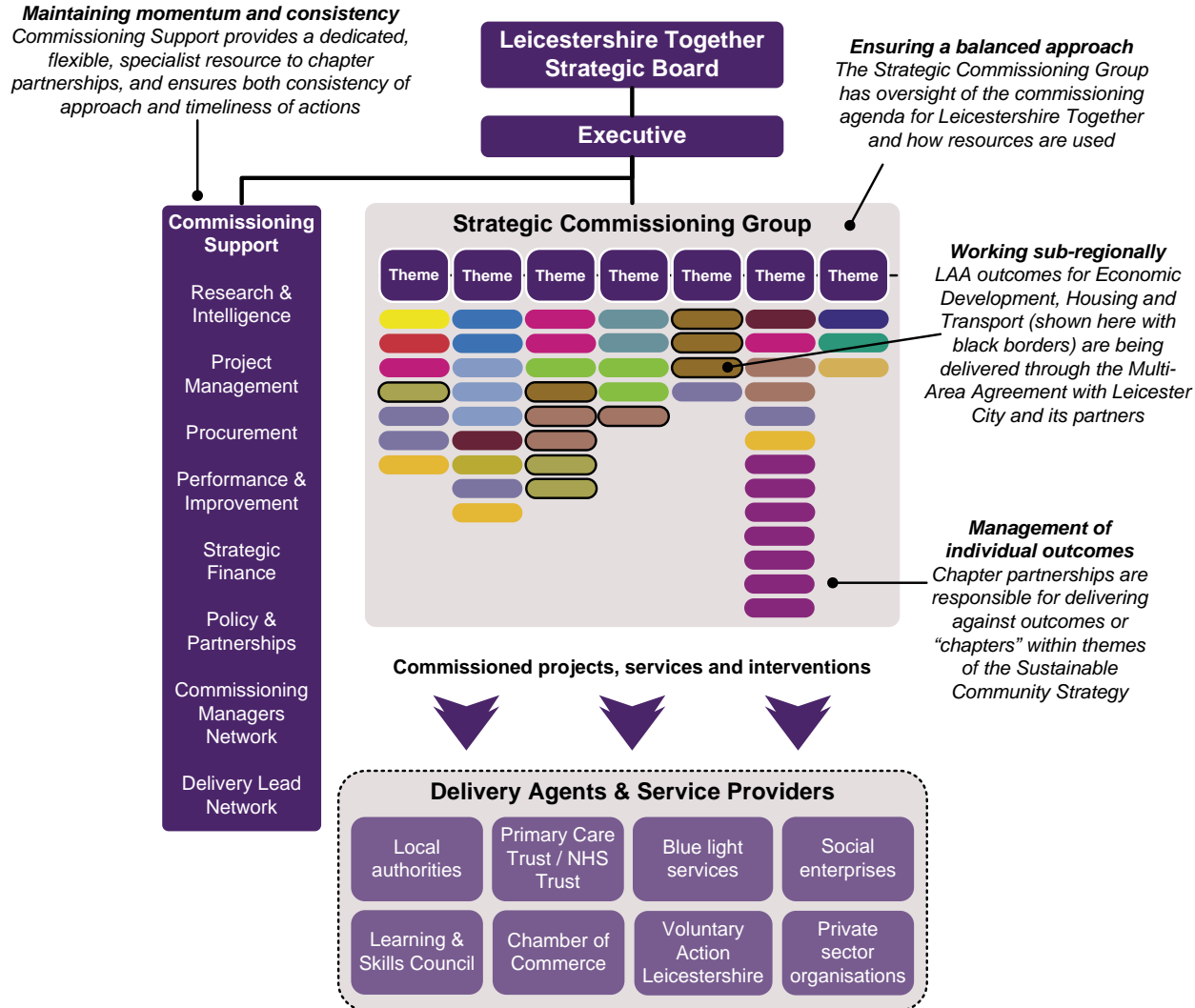




November 2009

- Strategic Commissioning Framework agreed and launched December 2009
- Strategic Commissioning Group and Commissioning Managers network to be set up
- Commissioning support with existing resources

Overview



Effective Governance ensures:



- That the partnership is **involving and inclusive**.
- That it takes part in **active management** of the commissioning agenda.
- That it is **open to innovation**.
- That there is a **shared understanding** between partners and stakeholders.
- That partners have **aligned strategies and resources**.

Strategic Commissioning Group

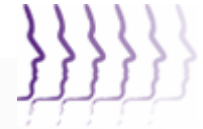


Strategic Commissioning



- Members who have senior managerial or strategic roles within their organisation
- Influence over how resources are directed
- Awareness across all seven themes of the SCS
- First meeting 28th January 2010

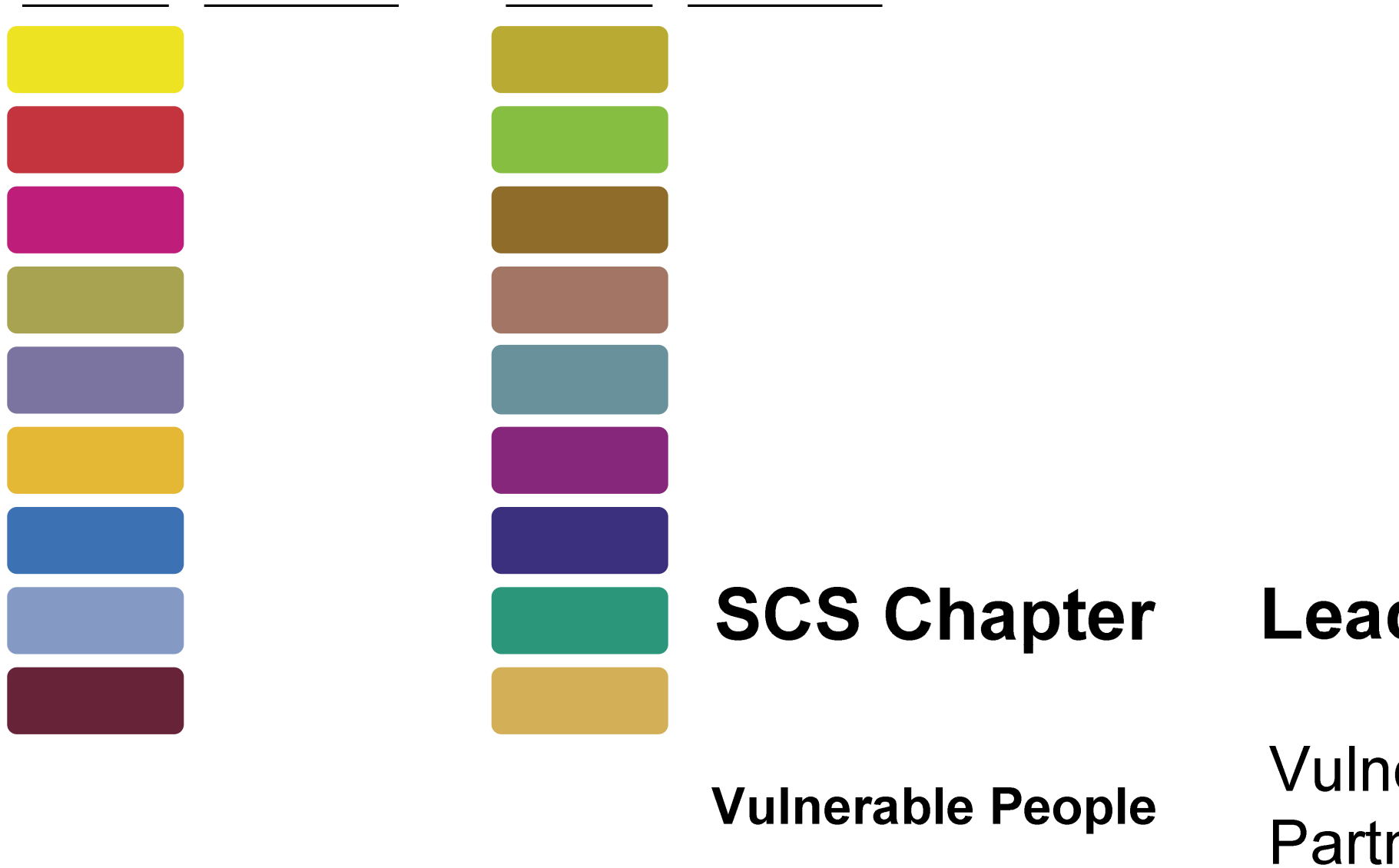
Strategic Commissioning Group



Membership:

- Brian Roberts(**Chair**) **Efficiencies**
- Sandy McMillan **Vulnerable People/Older People**
- Lynn Aisbett **Vulnerable Places/Priority Neighbourhoods, Rural, Access to Services**
- Mike Dalzell **Economic Development and Enterprise**
- Sue Smith **Housing/Places in Leicestershire**
- Neil Lambert **Volunteering/Stronger Communities**
- Heather Broughton **Sport and Culture**
- Peter Williams **Climate Change**
- Phil Hawkins **Safer Communities**
- Ian Drummond **Transport**
- Steve Atkinson **Cleaner and Greener**
- Nigel Farrow **Children and Young People**
- Peter Marks **Healthier Communities**
- Christine Fisher **CAA/Performance/Places in Leicestershire**

Chapter Partnerships

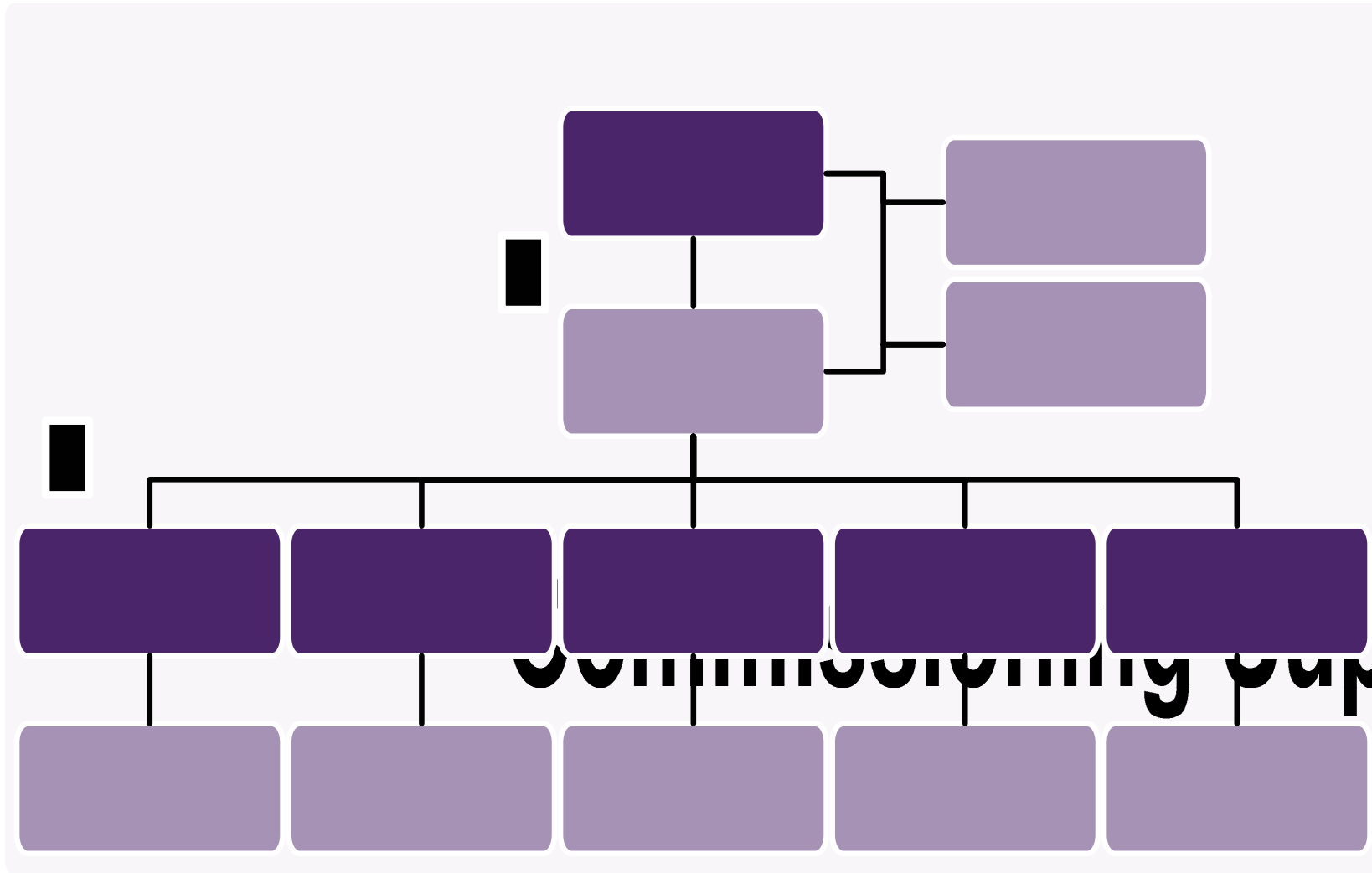


Chapter Partnerships



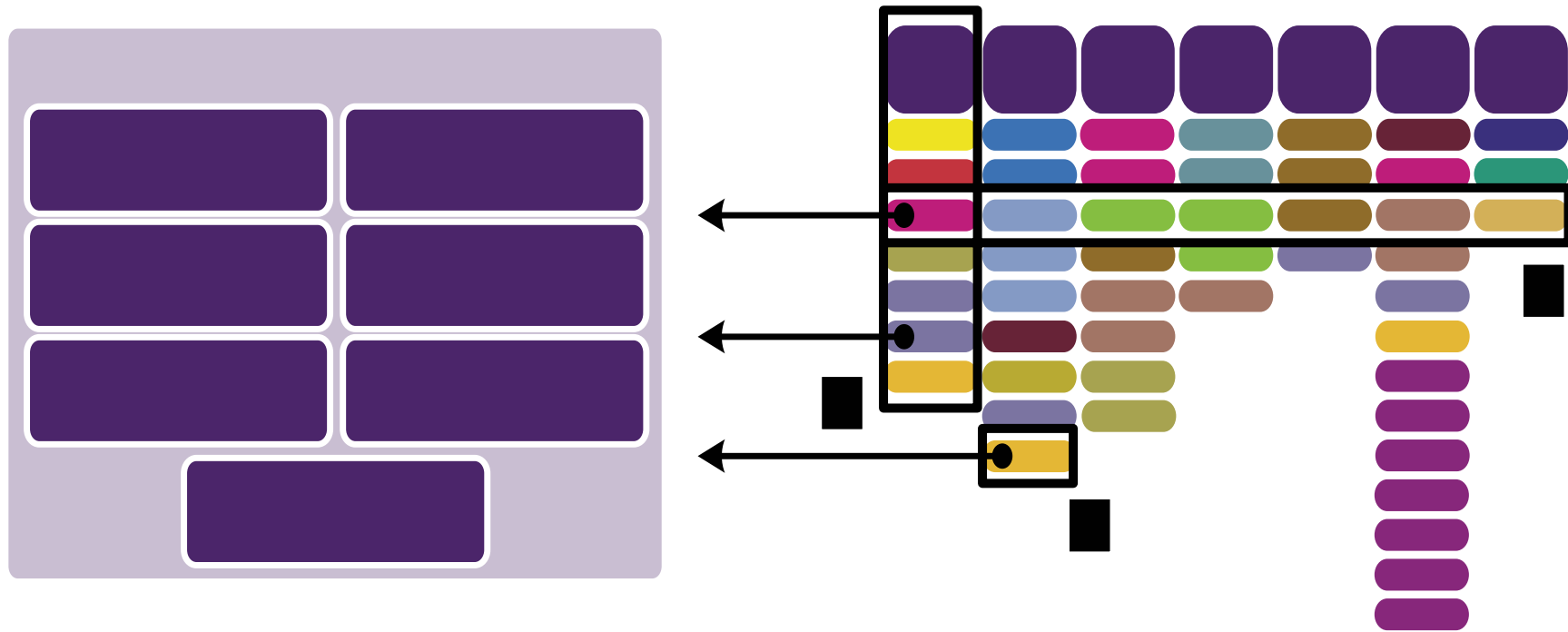
- Main joint commissioning vehicles of Leicestershire Together
- Active involvement in commissioning for community or locality
- Drive the delivery planning process

Commissioning Support



Commissioning Support

Commissioning Support



Commissioning Support

